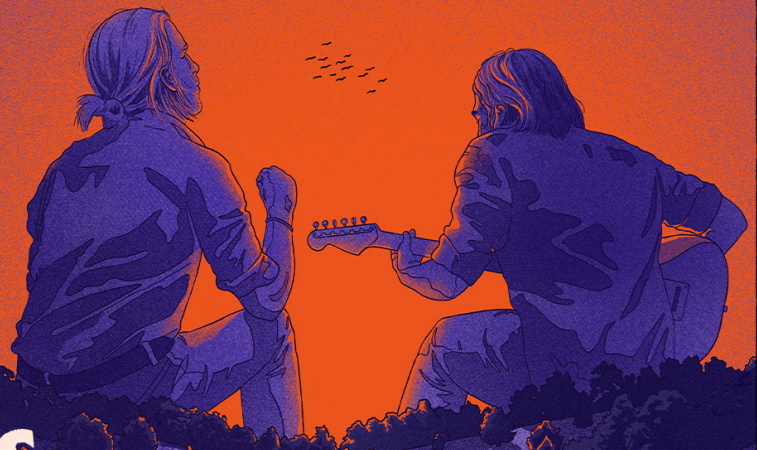


A DAY ON THE  
**GREEN**  
PRESENTS

THE **TESKEY**  
**BROTHERS**  
**BAND OF HORSES**  
**SIERRA FERRELL**  
**CMAT**  
**CHARLIE NEEDS BRACES**



SUNDAY 19 JANUARY  
**MOUNT COTTON**  
**SIRROMET WINES**

[ADAYONTHEGREEN.COM.AU](http://ADAYONTHEGREEN.COM.AU)  
PRESALE: MON 24 JUNE • TICKETS ON SALE: THU 27 JUNE

AAMI

MG LIVE

Roundhouse

Part of the  
MORISON GROUP

Double J

La Trobe  
FINANCIAL

## Tuscan Terrace Package

Upgrade your a day on the green ticket to the Tuscan Terrace. Elevate your concert experience and enjoy the atmosphere of the concert with the comforts of the Tuscan Terrace.

The Tuscan Terrace experience includes:

- Food and premium beverage package
- Tuscan Terrace offers a relaxed, open and spacious viewing area with a blend of café seating, and high-bar tables. Please note, there is no reserved seating available so we recommend arriving early to secure your spot
- Private toilet facilities
- Shaded areas to relax out of the sun
- Table service for both food and beverages
- VIP Parking Pass
- Limited amount of places available

**\$249 per person\***

\*a \$5.95 handling fee per transaction

Sample menu - (subject to change)

Regional grazing table (4pm-5pm)

Selection of cured meats, pickled & chargrilled vegetables,  
Artisan cheeses, fresh & dried fruits, breads & condiments

Substantial canapes (5:20-6:20pm)

\*Spiced pumpkin & feta Pide with basil pesto (V)

\*Wagyu beef sliders, cheese, tomato, lettuce & burger sauce (GF Available)

\*Peking duck spring rolls with sweet chilli (Vegetarian available)

\*Mini chicken & leek pies (GF Available)

Dessert

Chefs' selection of mini desserts, donuts & seasonal fruits

Additional Information:

Tuscan Terrace ticket is an upgrade only.

A General Admission or Reserved Seat ticket must also be purchased. Seating in the Tuscan Terrace is not allocated and may be limited. The Tuscan Terrace at Sirromet is located at the back of the venue. It is located at the top of the hill overlooking the concert area and while there is a view of the stage, patrons may wish to return to their reserved seat or the general admission area during performances. An email will be sent to all Tuscan Terrace ticket holders within approximately 1 week of the event detailing package menu, confirmed service times & car park pass.

A DAY ON THE  
**GREEN**

SIRROMET